

FOTRIC
— Thermal Intelligence —



FOTRIC 226_B
Auto Body Temperature Screening Infrared Imager

FOTRIC 226_B

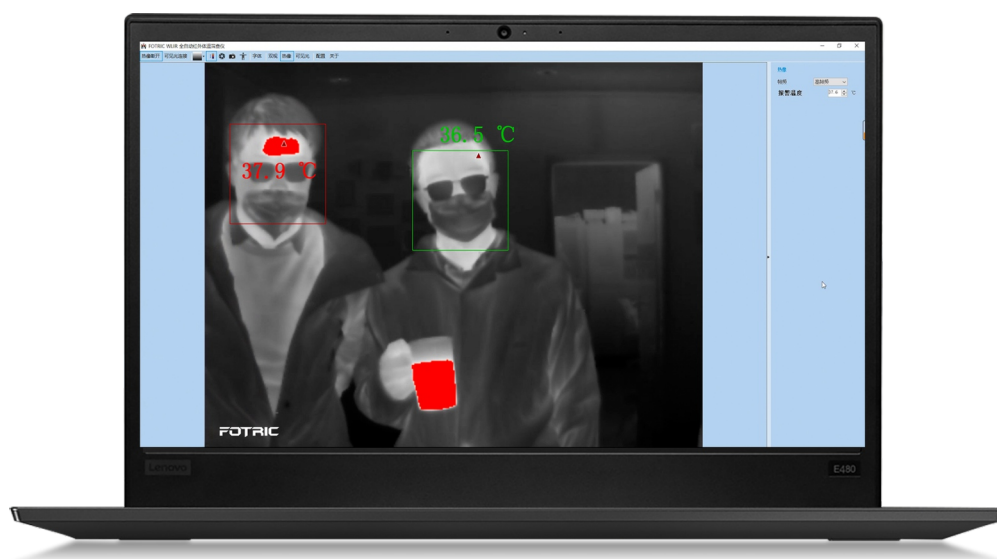
Auto Body Temperature Screening Infrared Imager



WLIR PC Software – For Body Temperature Screening

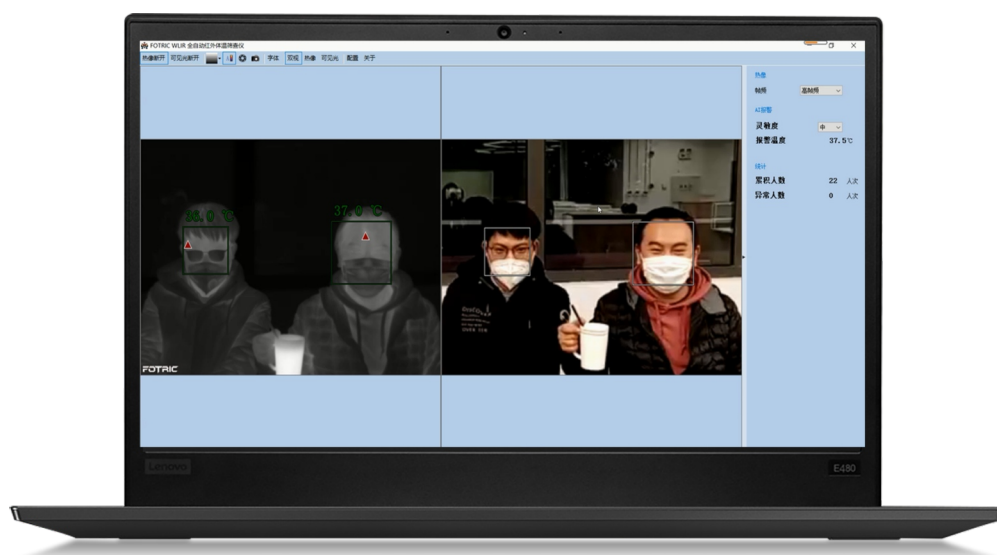
Automatically Lock Face Temperature to Prevent False Alarms

Fotric 226B comes with WLIR software are standard. WLIR has a built-in AI face detection module, automatically lock face for temperature measurement, intelligently shield high-temperature sources other than faces in scenes.



Intelligent Temperature Calibration Algorithm Prevents False Negatives

WLIR has a built-in body temperature calibration algorithm, which automatically collects face temperature in different scenarios for self-learning, and adjusts the body temperature alarm threshold in real time by adapting to ambient temperature changes, preventing people who report abnormal body temperature due to morning or night temperature differences.



Automatically Statistics of Screening and Alarming Numbers

WLIR can automatically count the number of screened personnel and the number of suspected abnormal body temperature alarms during the screening process, for an epidemic prevention and control.

Automatically Temperature Alarm

When an abnormal temperature person is detected, WLIR will automatically emit a buzzer to alert the alarm, and the face recognition frame of will be immediately displayed in red accordingly for a quick on-site identification.

Automatically Snap Shot for Abnormal Body Temperature

When an alarm is triggered by an abnormal body temperature person, WLIR will automatically capture the photo of the detected person for later statistics and analysis.



Body Temperature Screening Applications

With WLIR PC Software



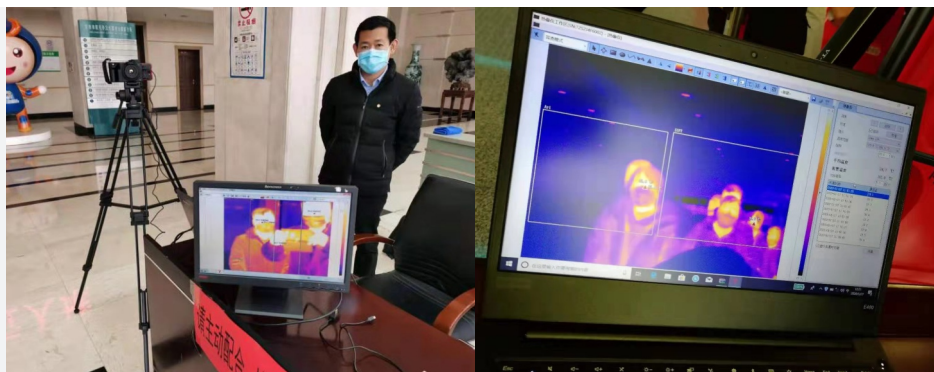
For Transportation Hub



For Hospitals



For Government Agencies



For Corporations and Factories



Specifications

Model	FOTRIC 226B
IR Resolution	384 × 288 pixels
Thermal Sensitivity (NETD)	<0.05°C@30°C
Field of View (FOV)	28°H × 21°V
Detector Type	Polysilicon-FPA, uncooled microbolometer, 17μm, Spectral Range 8-14μm
Frame Rate	50Hz
Temperature Range	20°C-60°C (68°F-140°F)
Temperature Stability	±0.5°C
AI Face Detection	Dual Light Detection (visible light and infrared thermal)
AI Body Temperature Algorithm	Calibrate alarm thresholds in real time based on ambient temperature
Statistic Function	Automatic statistics of screening number
Shooting Mode	Automatic abnormal temperature snap shot or manual shooting
Alarm Function	Both color alarm and sound alarm
Color Pallet	Black-White/Iron/Rainbow
Image Format	Standard JPEG with temperature data
Interface Connection	USB
Software	WLIR Body Temperature Screening Software
Operating Temperature	0°C-40°C (32°F-104°F)
Storage Temperature	-20°C-50°C (-4°F-122°F)
Enclosure Rating	IP40
Charging System	DC 12V Charger
Weight	±560g
Dimensions (LxHxW)	97mm × 145mm × 93.5mm
Tripod Mounting	UNC ¼"-20
Warranty	1 year
Standard Configuration	Fotric 226B infrared imager, standard lens, DC adaptor, 3m USB, Calibration Certificate, Getting Started Manual (with warranty card)