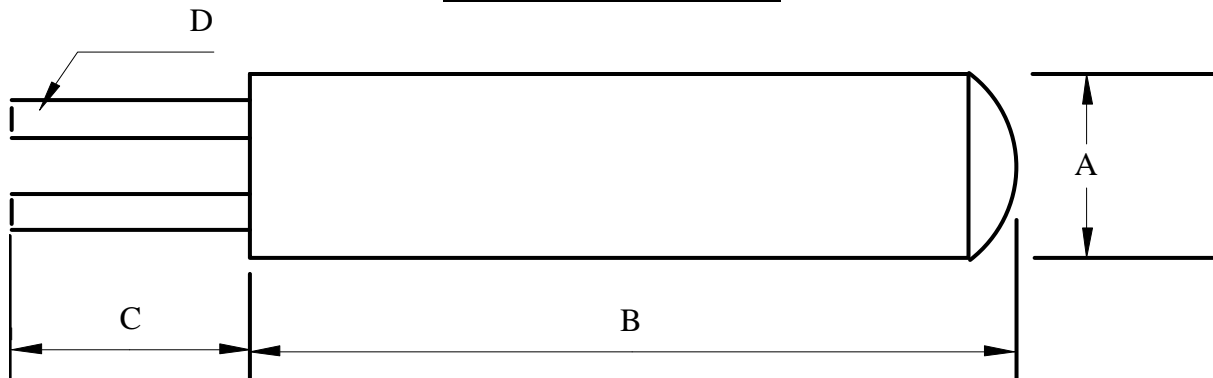


SDL PRODUCT DATA SHEET

PRODUCT TYPE; **Pt100/15C, SDL Band 1**

DATE; **17/04/13**



Product description	Ceramic, wire wound platinum resistance detector	
R ₀	100± 0.1Ω	
nb	This is measured at a point 5mm from the body of the detector	
Conforms	BS;EN 60751;1996	Class B
Construction	Partially supported coil	
Temperature range	-200° +650°C	
Lead Material	Pure Platinum	
Self heating effect;	Air	652mK/mW
Response time (t _{0.5});	Air at 1 m/s	4 seconds
	Water at 1 m/s	0.180 seconds
Dimensions	A	0.9±5%
	B	15±1mm
	C	7mm minimum
	D	Ø 0.15mm
Sensing length	13mm	
Available	Current product	