

TemProfiler

Temperature Profiling System

for Furnaces

The *TemProfiler* system is the most reliable, accurate and rugged temperature profiling system in the world. For those who need to know what is happening to their product inside a conveyorized or large batch oven, only the *TemProfiler* will do.



Components



Data logger C-X2

Protected by the TP-barrier the logger records the most relevant temperature of the curing process, the Object temperature. Up to six probes (extendable to 12) can be connected to provide a wealth of information about the curing process.

The extended memory will hold 2,50,000 measurements. The user can set measuring interval. 10 curing processes can be logged and stored before overwriting of the data.

Temperature Range	0°C to 1200°C	Power Cons.	4mA
Accuracy	±0.3 Deg C.	Dimensions	105 x 82 x 30mm (LWH)
Resolution	0.1°C	Weight	285 grams
Thermocouple Type	K	Memory	2,50,000 readings max.
Number of Channels	6 (extendable to 12)	Indicators	LCD Screen
Op. Temp. (Logger)	0°C to 60°C	Printing	Infra red (HPSIR)
Logging Interval	1 sec. to 1 hours	Communication	USB
Power Supply	3 Pcs, 1.5 V AA Type.	Cable	Moulded USB

TP9000 Series Thermal Barriers

The Space age Insulation and the Heat Sinks keep the data logger cool and don't let the temperature of the data logger to rise beyond 56 DEG C.

- Max temperature up to 875°C
- Material: Stainless Steel
- Various / Customs Heights available to meet limited clearances
- Wear strips minimize maintenance costs

Standard Thermal Barriers:

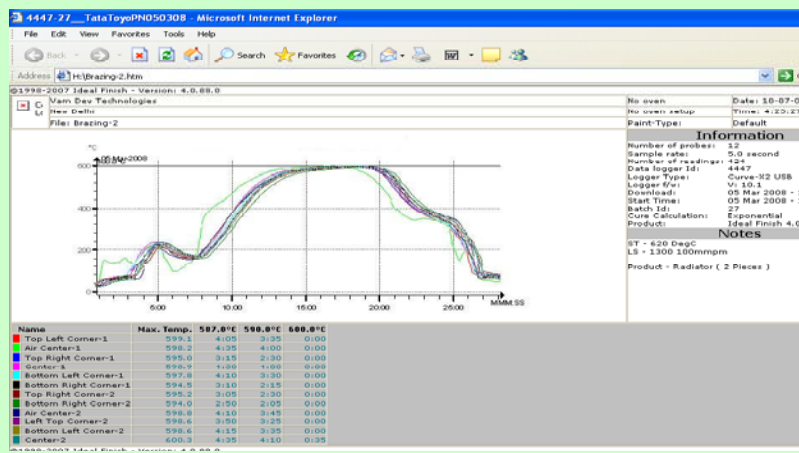
Part No:	TP 9008	TP 9010	TP 9012	TP 9014	TP 9016	TP 9018
Weight: Kg (appr.).	14.5	16	17.5	21	31	48
Height: mm	125	175	190	232	278	351
Width: mm	275	275	275	300	350	475
Length: mm	435	435	435	460	510	635
Temperature	Time					
250°C	3hr.30mn.	5 hr	6 hr	9 hr	14 hr	23 hr
450°C	1hr.40mn.	2hr. 30mn.	2h. 50mn.	4hr.45mn.	7hr.45mn.	11hr.45mn.
650°C	1hr.15mn.	1 hr.45mn.	2 hr	3 hr.10mn.	4hr.50mn.	7hr.45mn.
850°C	50 mns	1 hr.15mn.	1hr.30mn.	2hr30mn.	3hr. 45mn..	6 hr



Software: Ideal Finish

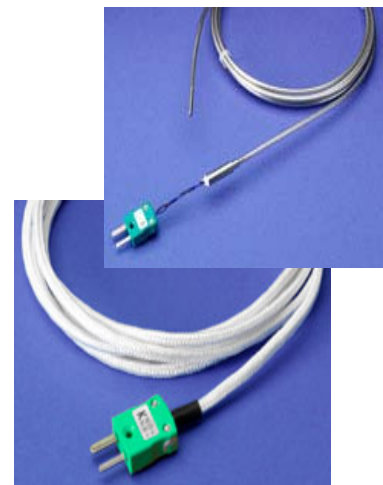
Ideal Finish software is a completely new software package that has been developed to meet the needs of the heat treatment industry.

You can do a lot of Profiling and the analysis of the logged data to make informed decisions.



Temp. Probes

High Accuracy probes to meet the demanding requirements.



Specifications are subject to change without notice.

Smart Meter

[Http://www.smartmeter.com.tw](http://www.smartmeter.com.tw)

[Http://www.umarket.com.tw](http://www.umarket.com.tw)

TEL: +886-2-27925208 FAX: +886-2-27916140

email: dean@smartmeter.com.tw

Distributor: