

Handy type 10-channel logger
midi LOGGER GL200A
Sales Manual



GRAPHTEC

The midi LOGGER GL200 has evolved

10 channels compact data logger

No only for temperature but also for voltage fluctuation measurement

- > 10-channel isolated multi-function input
- > Corresponding to max. 10ms sampling **NEW**
- > Save data to USB memory directly /
The USB memory can be replaced during measurement **NEW**
- > Safety measurement using internal flash memory
- > Eye-friendly 3.5" TFT color LCD



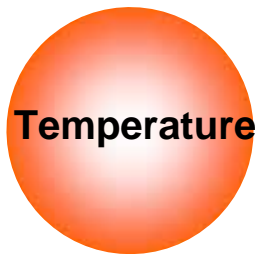
Features



10 channel isolated multi-function input

>Use multi-channel isolated input method not receiving the influence among channels by various type of input signal even though it's a small size. No need to worry about wire.

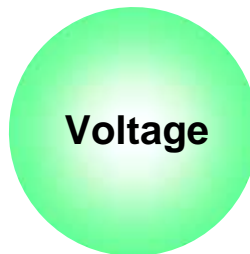
>Available to measure different phenomena such as multi-function of temp/ humid/voltage/pulse/logic for input signal, temperature, humidity, and voltages, etc.



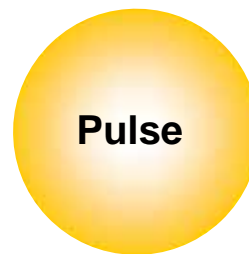
Temperature



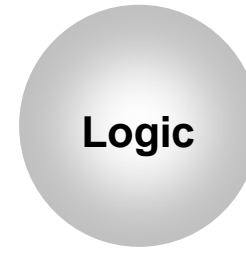
Humidity



Voltage



Pulse

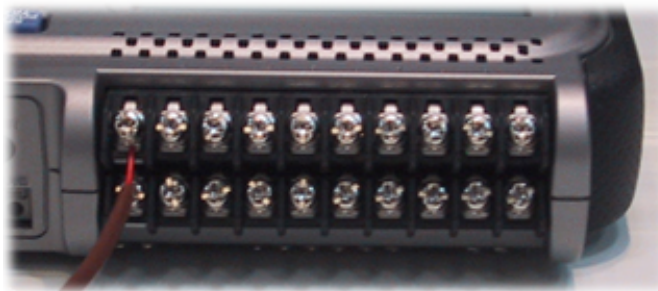


Logic



M3 screw clamp terminal

Use M3 screw clamp terminal (small type) for input. Available to wire easily and certainly with ring (O)/fork (U) crimp



Ring crimp



Fork crimp

Corresponding to max. 10ms sampling

NEW

The GL200 have been used with many customers mainly for temperature measurement. We received the requirement from the customers to increase the sampling speed a little, so we provide that the 10ms max. sampling speed can be selected when number of channels is limited.

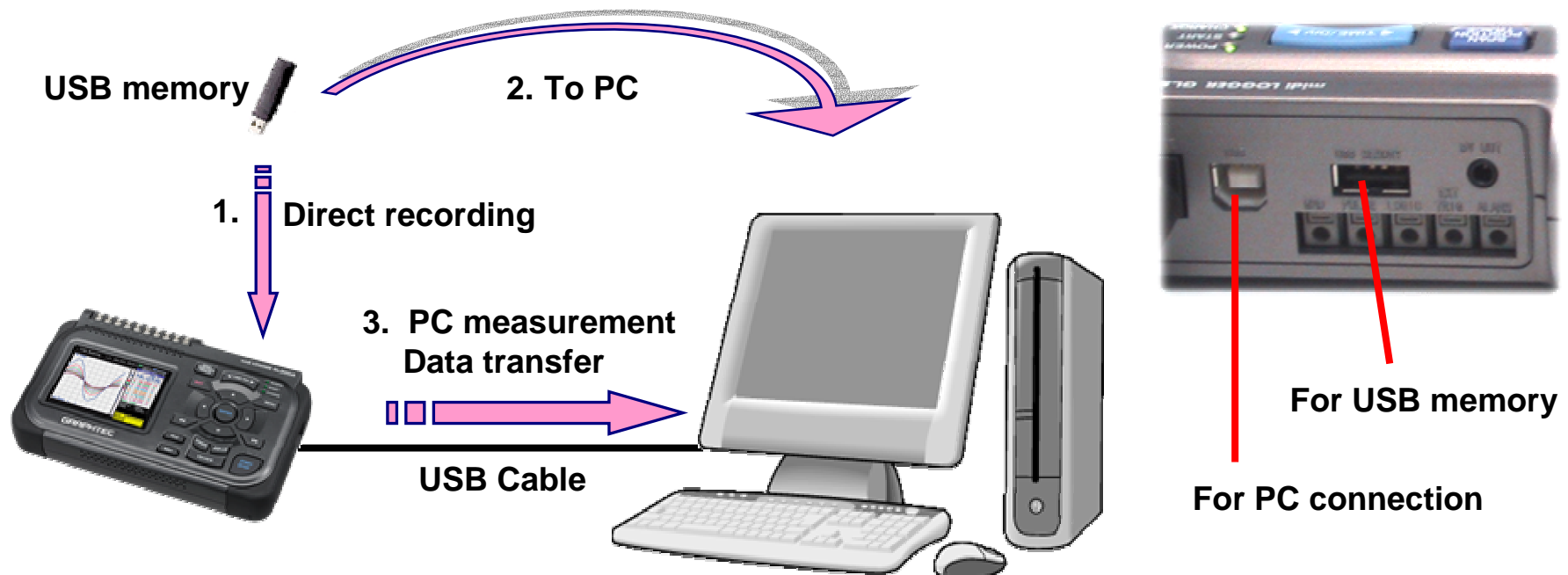


| Sampling speed | | 10ms | 20ms | 50ms | 100ms | 1s |
|------------------------------|-------------|------|------|------|-------|----|
| Available number of channels | | 1 | 2 | 5 | 10 | 10 |
| Measurement object | Voltage | X | X | X | X | X |
| | Temperature | | | | X | X |

*The humidity measurement uses the volt range of 0-1V with scaling function, so the sampling speed for the humidity measurement is same as volt measurement.

Available for USB memories/Easy PC connection (2USB ports loaded)

1. Connect USB flash memory to GL200 to record data directly
Copy measured data of internal memory to USB flash memory
2. Connect USB flash memory to PC to display data with EXCEL
3. Available to PC measurement if connecting between GL200 and PC with USB cable. Also transfer internal memory data to PC



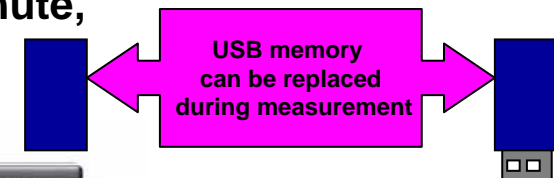
For long time measurement

>Standard internal recording media with flash memory Available to hold data after turning the power off

>The USB memory can be replaced even during measurement. During he replacement, measured data is stored in the buffer memory for 5 minutes maximum.

NEW

>The measured data file is automatically closed in every 1 minute, so the data is protected against accidental power off.



3.5MB internal flash memory



Available time for data recording (at the time of 10ch measurement, pulse & logic off)

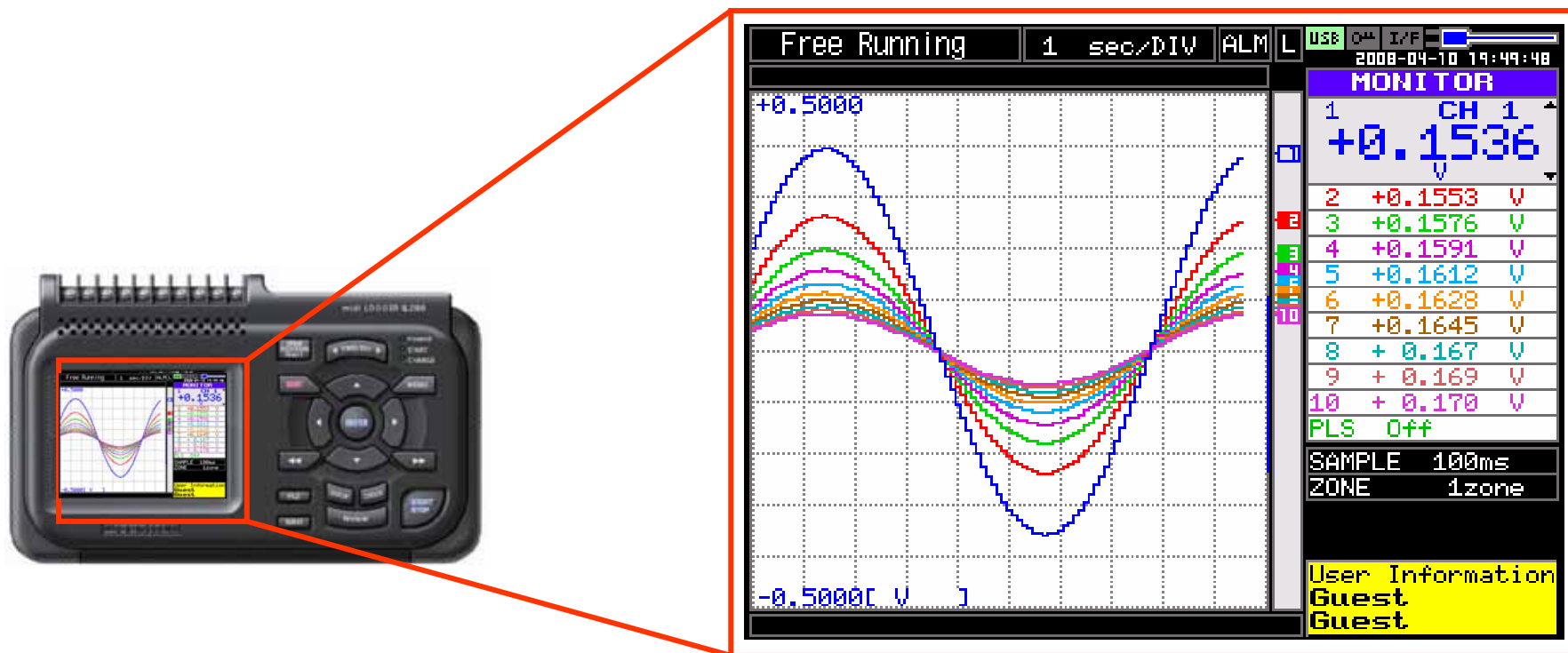
*1: Max. no. of channels that can be specified is 1. *2: Max. no. of channels that can be specified is 5.

| Recording interval (sampling speed) | 10ms *1 | 50ms *2 | 100ms | 200ms | 500ms | 1S | 10S |
|-------------------------------------|-------------|--------------|--------------|--------------|--------------|---------------|----------------|
| 3.5MB internal flash memory | About 2.4h | About 4h | About 4h | About 8h | About 20h | About 1.8days | About 18days |
| 256MB USB flash memory | About 7days | About 12days | About 13days | About 26days | About 65days | About 130days | About 1300days |

Eye-friendly 3.5" TFT Color LCD

Adopt eye-friendly 3.5" TFT color LCD, which confirms setting of measurement conditions or measurement waveform, digital value

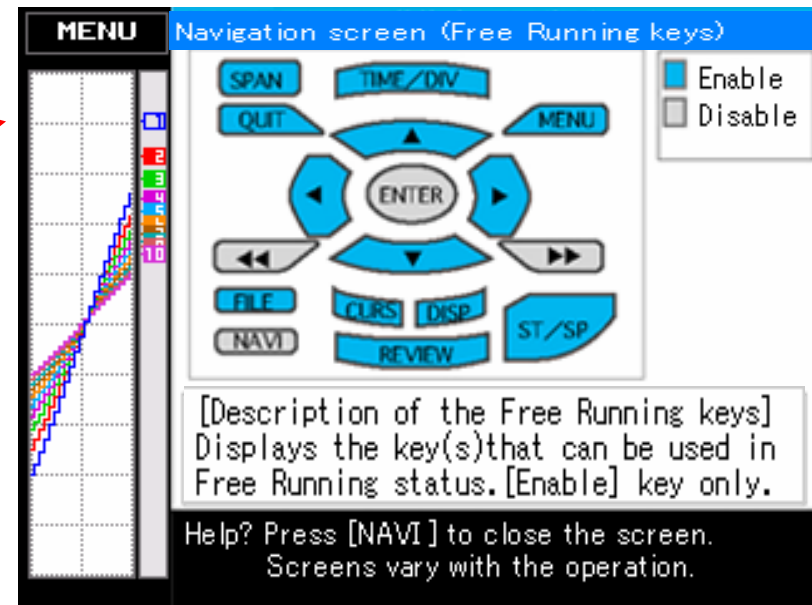
Adopting clear and ease-to-read color layout, the visibility is improved



Easy operation (Navigation screen)

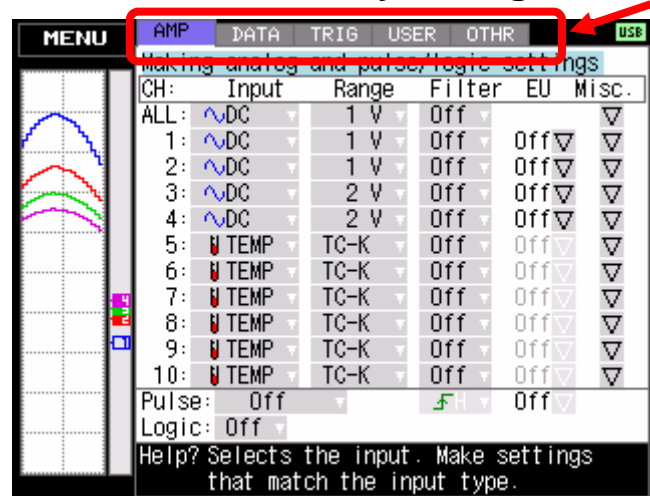
Press **NAVI** button to display the description of each operational button on LCD monitor.

Easy operation without having instruction manual

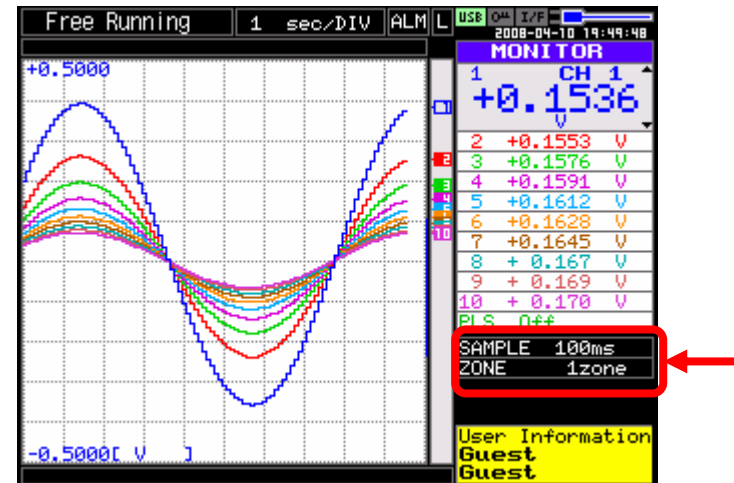


Easy operation to set and display

Measurement conditions are itemized user-friendly setting screen



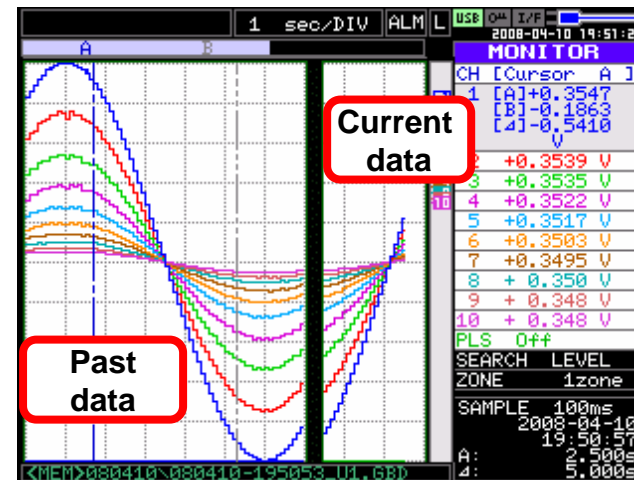
Quick settings make sampling (recording interval) and waveform display division (zone) change quickly



Available to display the current value and max and min value up to now

| CH | VALUE | Max | Min |
|-----|-----------|---------|---------|
| 1 | -0.3429 V | +0.4001 | -0.3658 |
| 2 | -0.3423 V | +0.4000 | -0.3660 |
| 3 | -0.3423 V | +0.4006 | -0.3672 |
| 4 | -0.3418 V | +0.4001 | -0.3666 |
| 5 | -0.3407 V | +0.4000 | -0.3613 |
| 6 | -0.3402 V | +0.4002 | -0.3613 |
| 7 | -0.3401 V | +0.4002 | -0.3611 |
| 8 | -0.339 V | +0.400 | -0.361 |
| 9 | -0.338 V | +0.401 | -0.360 |
| 10 | -0.338 V | +0.400 | -0.361 |
| PLS | | | |

Available to display and compare current and past data when pressing "REVIEW" button during recording

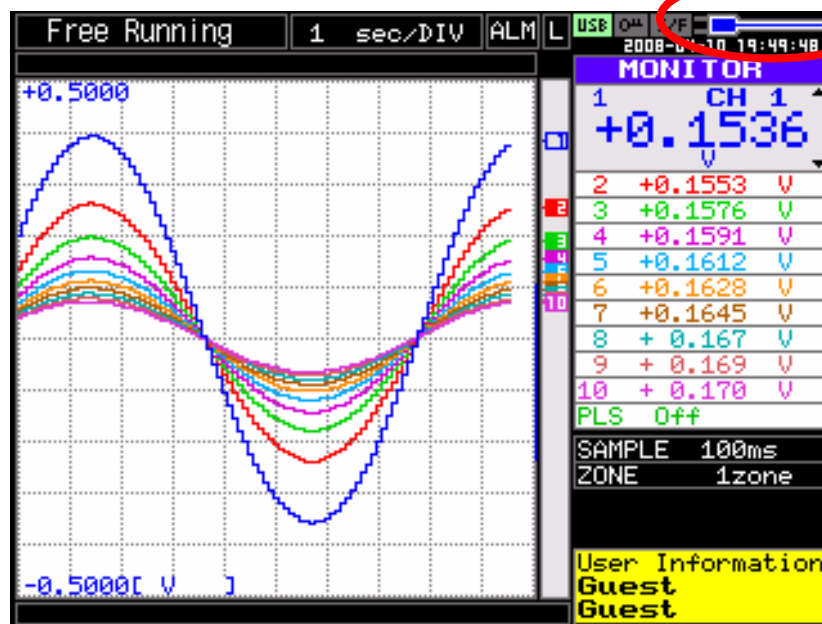


Battery pack (Option)

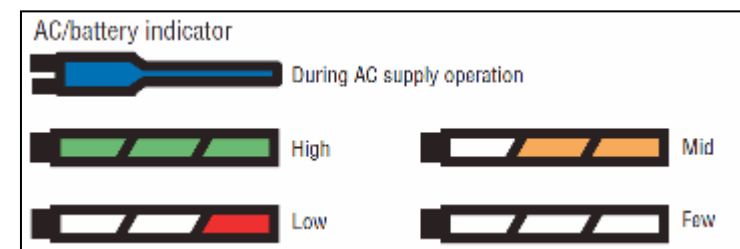
Battery life: Approx. 6 hours

Useful for battery drive at the instant stop of AC power or measurement at a site without power.

**Battery
pack B-517**

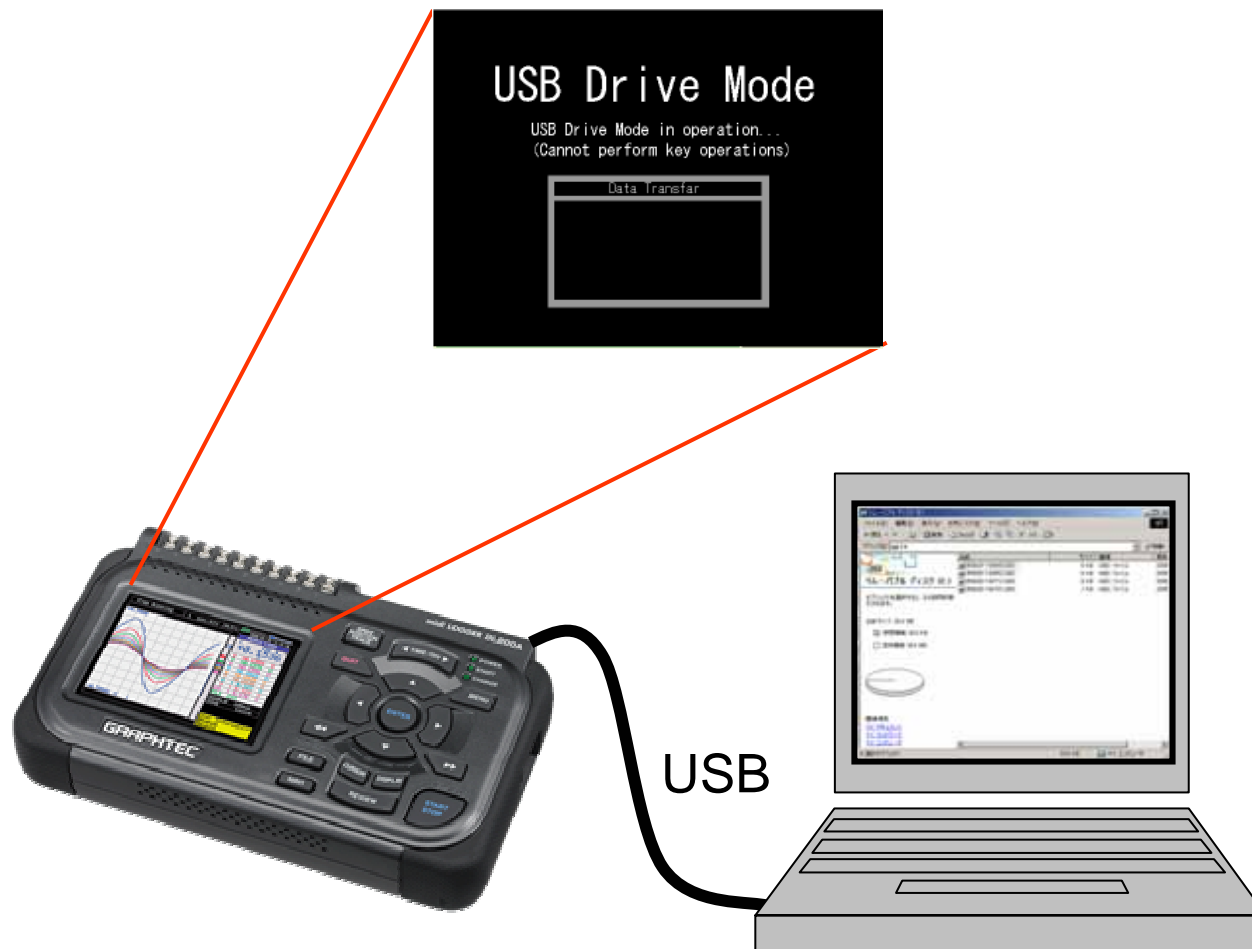


**Identifiable battery
indicator**



USB PC card drive mode

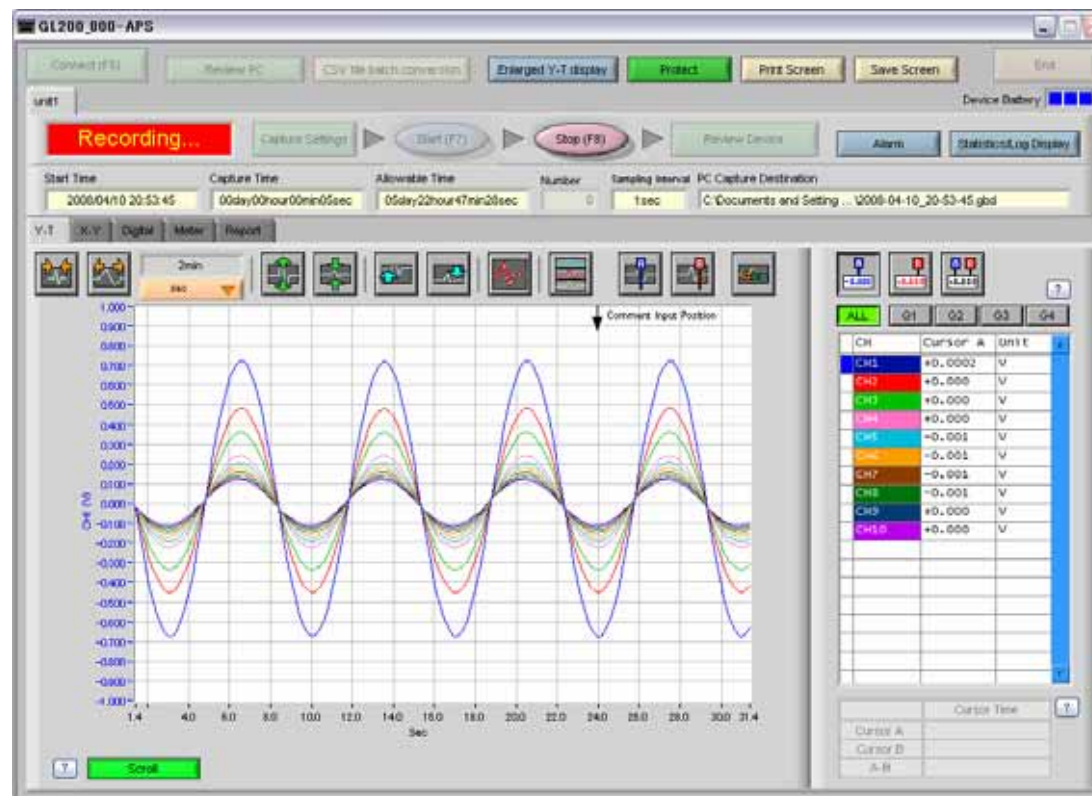
Available to recognize GL200A internal memory as external recording media for PC. Available to transfer data files by drag and drop on the window easily.



PC software standard features midi LOGGER Software

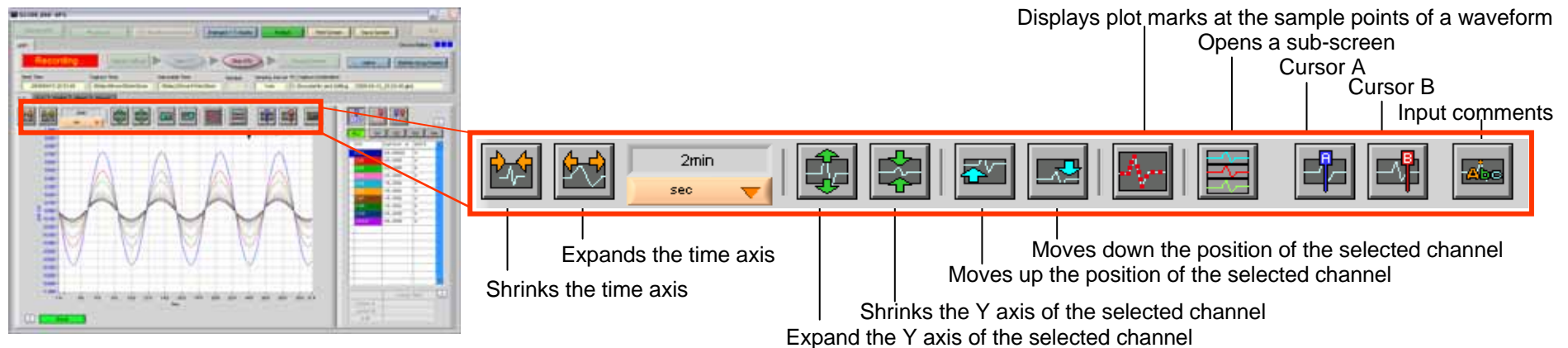
PC application software is attached as standard product in order to measure right after your purchase. This software supports to make reports such as waveform observation with PC or excel conversion of recording data, and so on.

Easy-to-use operation by GUI



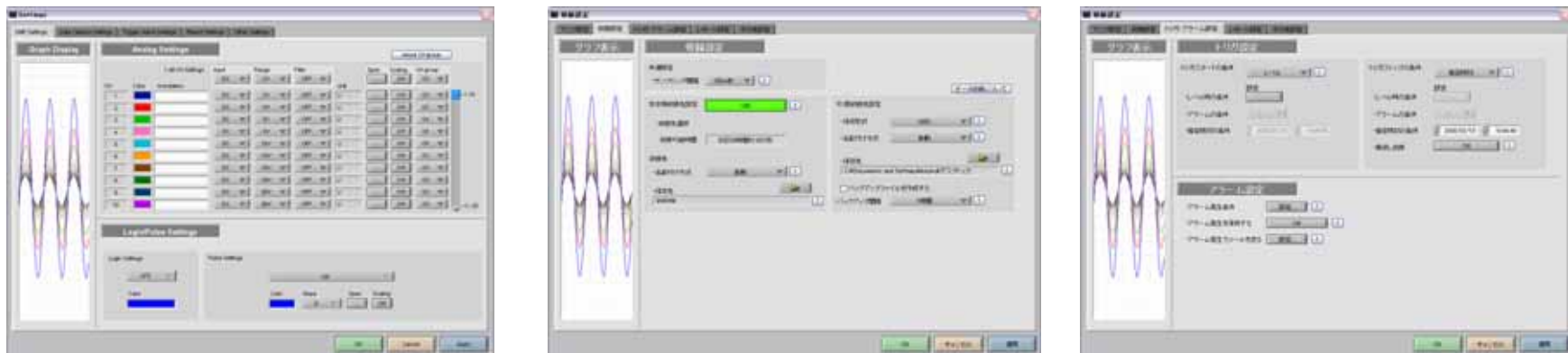
User-friendly interface

The interface employs intuitive icons to suit all ability levels. Just clicking the icons , you can change the waveform display



There are now only five settings screens.

The input waveform is displayed on all screens to illustrate the impact of each modification in real time.

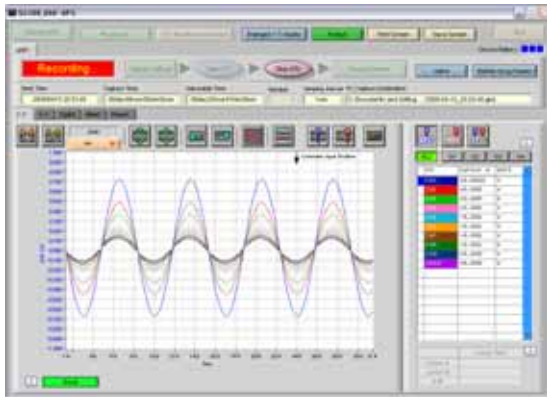


Variety of measurement displays

A wide variety of screen configurations are provided: Y-T, X-Y, digital, metering and report display.

Measurement display

Y-T



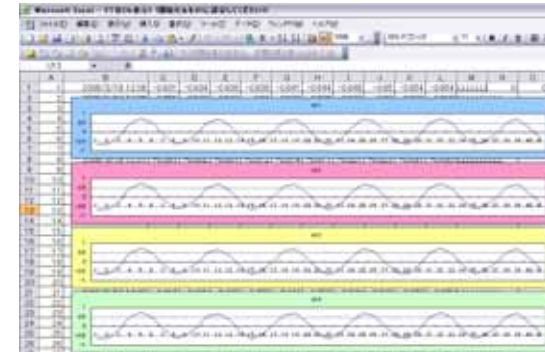
Meter



Digital



Direct Excel transfer

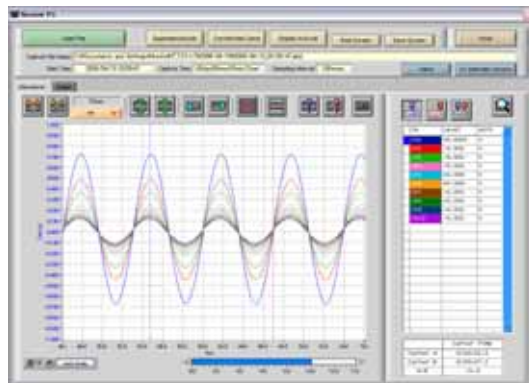


Direct data transfer to Excel with 100 ms sampling is possible

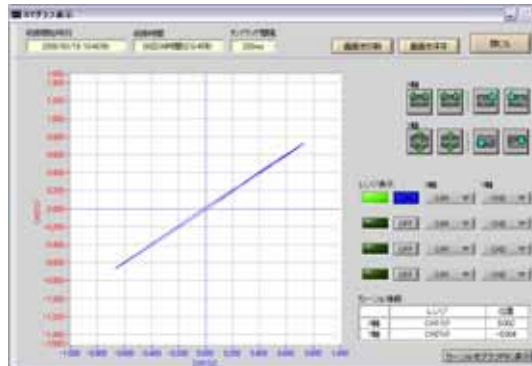
NEW

Data replay display

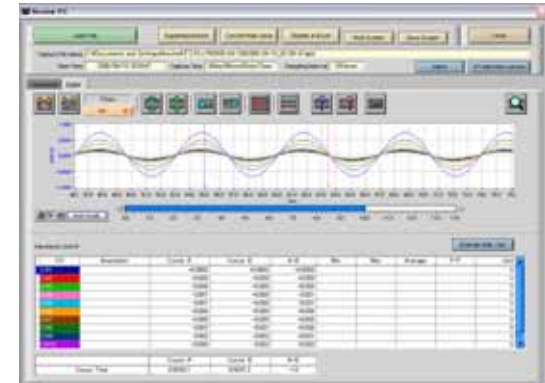
Y-T display



X-Y display



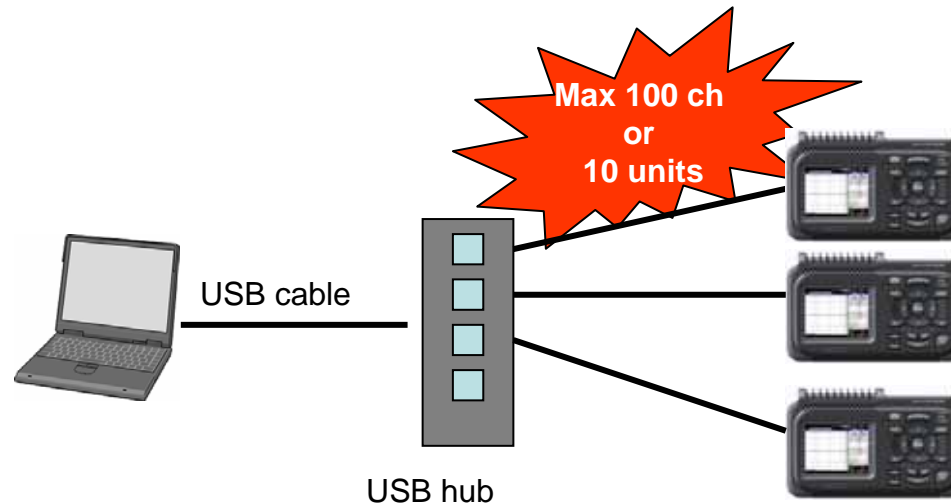
Digital display



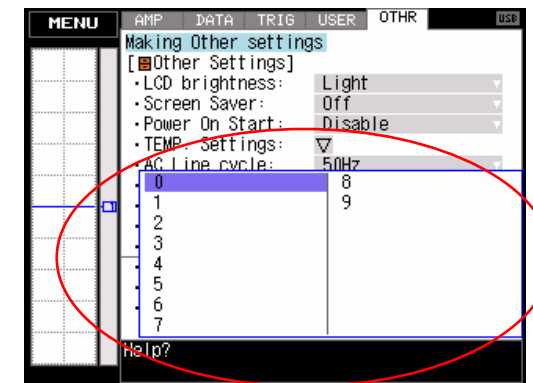
Multiple units can be controlled together

NEW

Using the midi LOGGER software, max. 10 units of GL200A can be controlled together. Also this software is compatible with the GL800.

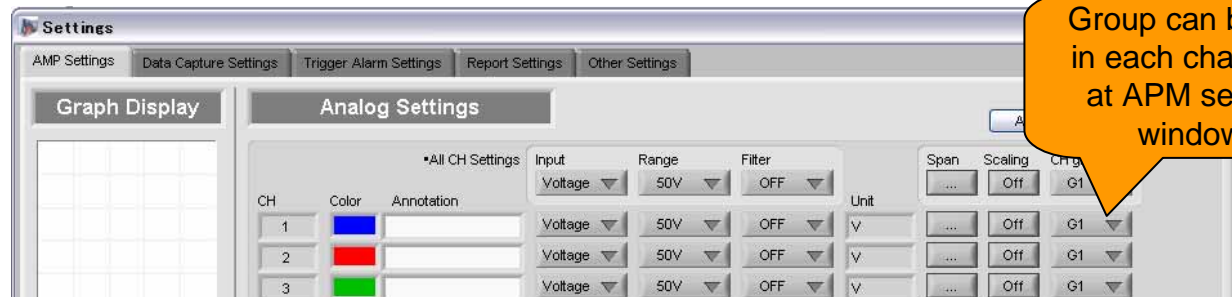


USB ID can be set the GL200A side



Selecting the model name
(GL200A / 800)

Each unit can divide the display channels to 4 groups max. (G1 to G4)



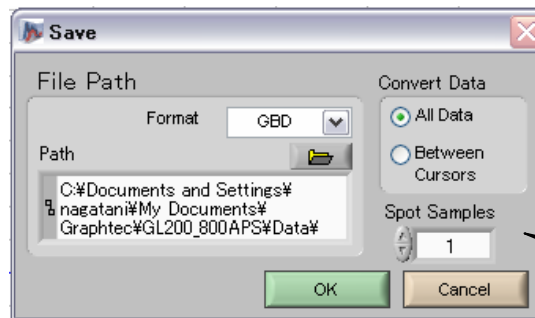
Group can be set
in each channels
at APM setting
window



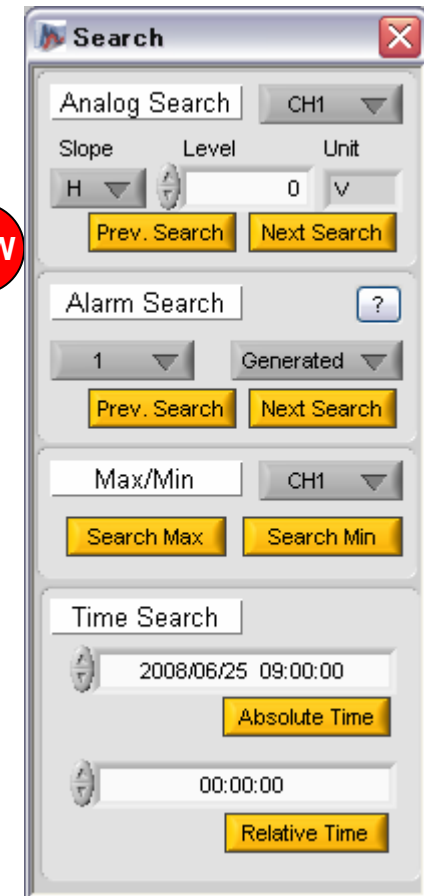
Useful functions

During measurement, Logic/Alarm condition display function and the protection function using password are provided. Also, after finish data replay, the CSV batch conversion display and data search function are provided for more convenient operation.

In the spot sample rate for CSV conversion, user specify rate is newly added, so the customer can specify their own spot sample rate.



NEW
Any spot sample rate can be specified



midi LOGGER GL200A Specifications

| Item | Description |
|---------------------------|--|
| Number of channels | Analog 10ch, Logic 1ch, Pulse 1ch (RPM, Instant, Count), Alarm output 1ch |
| Input method | Isolated input |
| Display unit | 3.5" TFT color LCD |
| Input type | DC voltage (20mV to 50V, 1- 5V) |
| | Temperature (Thermocouple: K, E, J, T, N, R, S, B, W) |
| | Humidity (Used an optional humidity sensor) |
| Recording interval | 10ms to 1h (there is a limitation on no. of channels for 100ms or faster sampling, Volt range only) |
| Internal memory | 3.5MB (Flash memory) · · · Hold data after put off the power |
| External recording medium | USB memory · · · Enable to save data directly |
| PC I/F | USB |
| Display | Waveform display/ Digital display switching, Review display |
| Power supply | AC adapter, DC drive, battery pack (Battery life: 6 hours with optional B-517, depending on our criteria specified) |
| Dimensions, weight | 194 x 122 x 41mm 480g |
| Accessories | AC power adapter, cable 1set, CD-ROM 1pc (PC software, PDF user manual), quick start guide |