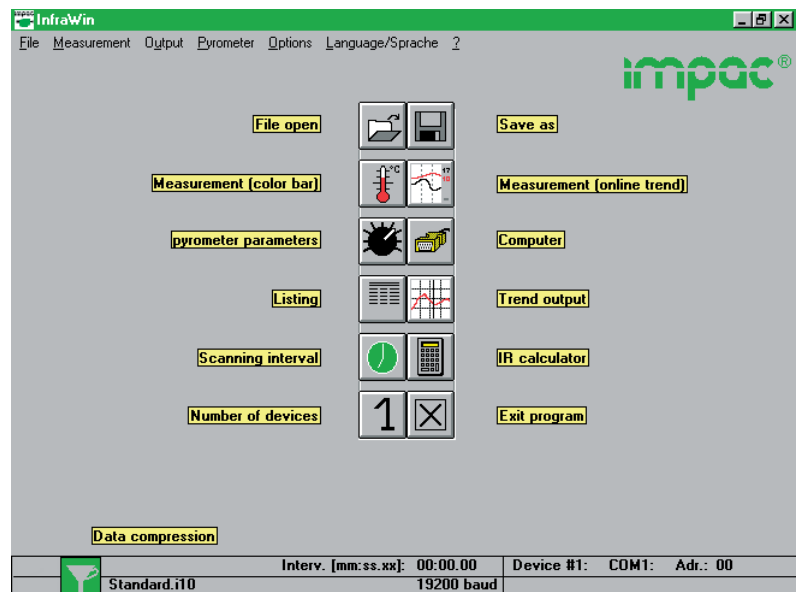


# InfraWin

## The standard software for Windows

The easy to use measurement and evaluation software for Windows to adjust stationary digital IMPAC pyrometers.

- ◆ Settings of all pyrometer parameters via computer
- ◆ Temperature display as color bar or online graphics
- ◆ Downstream evaluation as table, graphics or text file
- ◆ Calculation of the spot size in different measuring distances
- ◆ UPP® standard (Universal Pyrometer Protocol)



**InfraWin** is the standard software from IMPAC for adjustment and controlling of stationary, digital pyrometers.

The software is in 5 languages and for monitoring one or two pyrometers. The latest version of the software is available free as download from the internet home page.

After connecting the pyrometer to a PC, there are some parameters available in addition to the parameters directly adjustable. These are e.g. settings of a sub range or allocating an address for bus control at a RS485 interface; detailed informations is available in the user manual of the pyrometer).

The software is a good choice for fast changes of the settings or for controlling and protocolling the measurement.

## Pyrometer settings:

An IMPAC digital pyrometer connected to a PC will be automatically detected by the software. All available parameters are adjustable e.g. emissivity, response time, maximum value storage, output signal and sub range. Further special functions are adjustable for example controllers or TV parameters on instruments available with these functions. Changes are transmitted directly to the pyrometer.

## Measurement with color bar:

In this window a temperature value for the upper or lower limit can be adjusted numerically or with the mouse. For temperatures within this limit the color bar is displayed green, for other temperatures it is red.

The acquired minimum and maximum value is indicated as well as the inner temperature of the pyrometer. The emissivity is changeable during the measurement at any time.

## Measurement with graphic display:

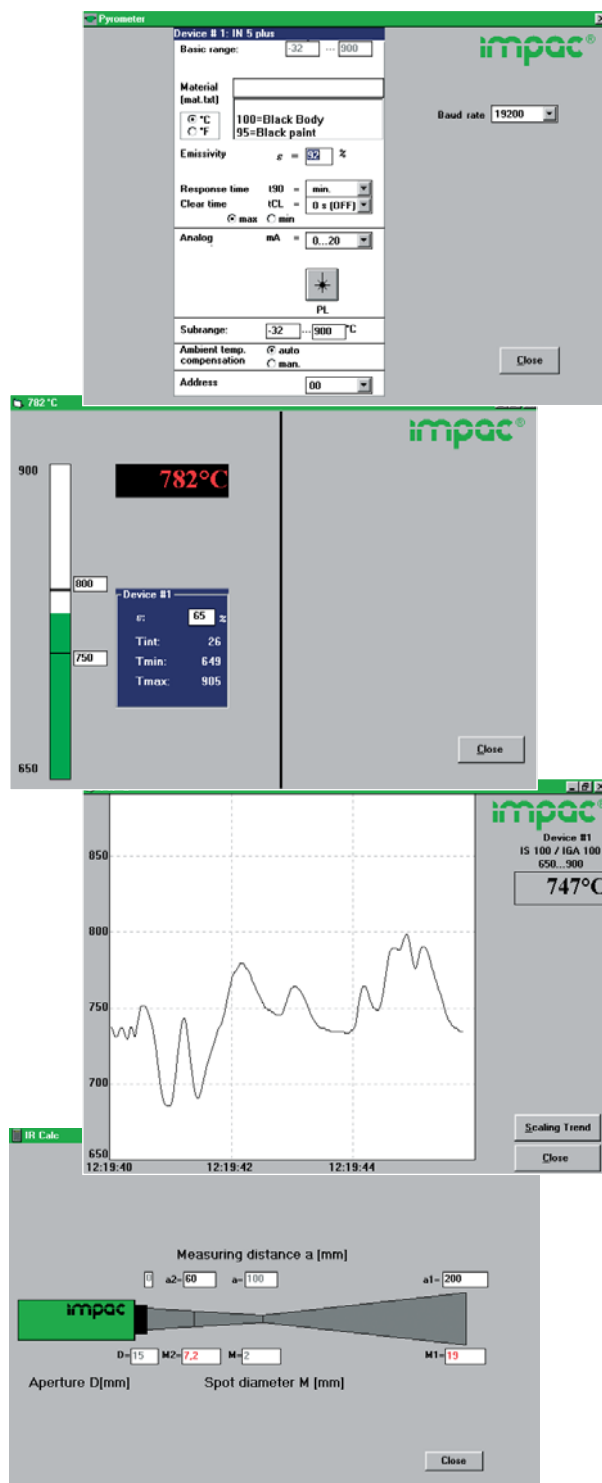
This window displays the temperature in a time scale graphically. All data is registered automatically and can be stored after the measurement with its own file name. For long term measurements the time intervals between two measuring points can be enlarged or the data compression mode can be selected.

## Infrared calculator:

After input of the aperture and the main spot size, the input of interim values it calculates spot sizes in different measuring distances.

## Accessories:

3 852 430 I-7520, converter RS485 ⇔ RS232



**IMPAC Infrared GmbH**  
Temperature measurement

Krütteler Strasse 32  
D-60326 Frankfurt/Main

Telefon: +49 (0)69/9 73 73-190  
Telefax: +49 (0)69/9 73 73-167

E-Mail: [info@impacinfrared.com](mailto:info@impacinfrared.com)  
Internet: [www.impacinfrared.com](http://www.impacinfrared.com)

