

GRAPHIC RECORDER

Smart 500 Temperature Graphic Recorder (K J Type, Graphic Printer, Datalogger, PC Interface)



Smart 500 series are testers with built in printer. The printer can output text format so that the users can get the exact reading, or it can output graphic format to give the whole changing tendency in one image. The sample period and the graphic scale are programmable so the user can get the exact result he expects. Besides the printer function, this unit is also a data logger. The recorded data can be logged to a computer for further use. Even though these testers are built with advanced functions, with the help of software menu button and guiding text display window. The users can setup these units just by browsing the menu and following the guideline that appears on the LCD just as he is using the cellular phone.

Smart 500 is the temperature graphic recorder. Normally when the operator is measuring temperature, he is not only concerning the present readings but also how it is changing. With this tester the operator can get the changing information on site without the help of a PC. The printout can be used as diagnostic evidence or a proof for certification etc.

FEATURES:

- Build in thermal printer for text and graphic printout.
- Dual 5 digits big font LCD display to provide simultaneous readout of T1 and T2.
- The easy access menu buttons and text area in the LCD display provide a simple and intuitively hierarchical menu operation for system setup.
- Button group for thermometer provides the direct access of the most commonly used functions for temperature measurement.
- Button group for printer provides the direct access of most commonly used functions for printer control.
- Photo coupler isolated RS-232 port provides the direct connection of data flow to a personal computer with the Window based software.
- Dual inputs thermal couple connector provides two inputs for K and J type temperature sensors.

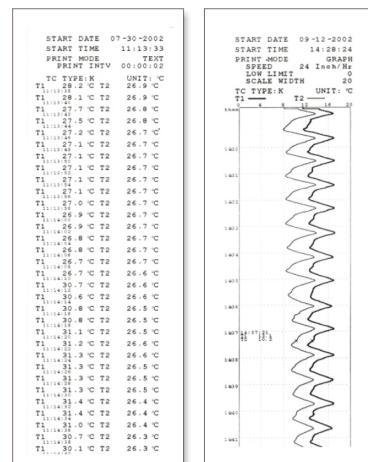
SPECIFICATIONS

Range	K Type: -200 ~ 1370°C (-328 ~ 2498°F) J Type: -200 ~ 760°C (-328 ~ 1400°F)
Accuracy	-200 ~ 1370°C...±0.1%rdg+0.8°C -328 ~ 2498°F...±0.1%rdg+1.6°F
Resolution	0.1°C/0.1°F
Memory	32,000 Records
Input Protection	60V DC or 24Vrms Maximum
Operation Temp	0°C ~ 50°C
Storage Temp	-20°C ~ 60°C
Power Supply	Approx. 100Hours
Battery Life	1.5V size AA alkaline batteries x 6
Dimensions	242(L)×98(W)×42(H)mm
Weight	Approx. 580g

TEXT AND GRAPHIC PRINTOUT:

When the meter is at text printout mode, the output will include the start time, end time, Interval and recording data. The format will make it easy to track the variation of the data and the actual recording time.

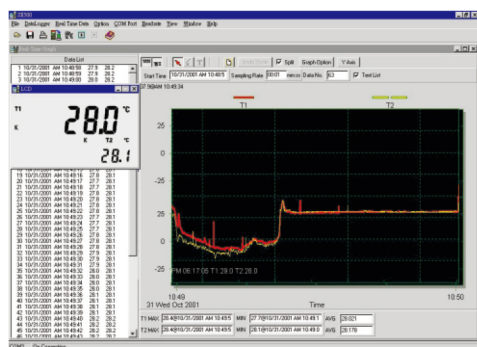
When the meter is at graphic printout mode, the start time, end time, and recording speed will be listed at first. In the graph, the Time scale will be labeled And printing scale is programmable.



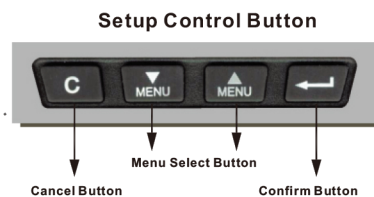
STANDARD ACCESSORIES

Tool Box, 1.5V Size AA alkaline batteries x 6, 9V Adapter, Instruction Manual, K Type Sensor x 2, Thermal Paper x 2, RS-232 Connection Cable, Windows Software Disk.

WINDOW BASED SOFTWARE INTERFACE



Data List
1 10/02/2001 PM 09:10:25 34.7 32.8
2 10/02/2001 PM 09:10:27 34.7 32.8
3 10/02/2001 PM 09:10:29 34.7 32.8
4 10/02/2001 PM 09:10:31 34.7 32.9
5 10/02/2001 PM 09:10:33 34.7 32.9
6 10/02/2001 PM 09:10:35 34.7 32.9
7 10/02/2001 PM 09:10:37 34.7 32.9
8 10/02/2001 PM 09:10:39 34.7 32.8
9 10/02/2001 PM 09:10:41 34.7 32.6
10 10/02/2001 PM 09:10:43 34.7 32.6
11 10/02/2001 PM 09:10:45 34.7 33.4
12 10/02/2001 PM 09:10:47 34.7 33.3
13 10/02/2001 PM 09:10:49 34.6 33.0
14 10/02/2001 PM 09:10:51 34.6 33.1
15 10/02/2001 PM 09:10:53 34.6 33.1
16 10/02/2001 PM 09:10:55 34.6 33.0
17 10/02/2001 PM 09:10:57 34.6 33.0
18 10/02/2001 PM 09:10:59 34.6 32.9
19 10/02/2001 PM 09:11:01 34.6 32.9
20 10/02/2001 PM 09:11:03 34.6 32.9
21 10/02/2001 PM 09:11:05 34.6 32.9
22 10/02/2001 PM 09:11:07 34.6 32.9
23 10/02/2001 PM 09:11:09 34.5 32.9
24 10/02/2001 PM 09:11:11 34.6 32.9
25 10/02/2001 PM 09:11:13 34.6 32.8
26 10/02/2001 PM 09:11:15 34.5 32.8
27 10/02/2001 PM 09:11:17 34.5 32.8
28 10/02/2001 PM 09:11:19 34.5 32.8
29 10/02/2001 PM 09:11:21 34.4 32.7



EASY SETUP!!

SOFTWARE
TestLink SE-500