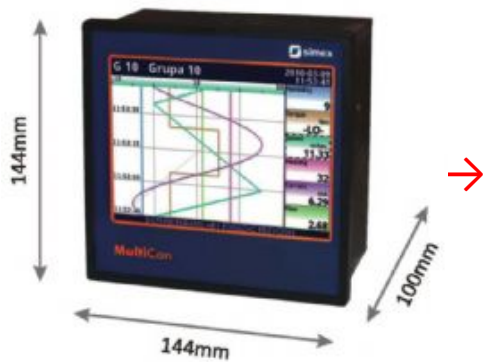
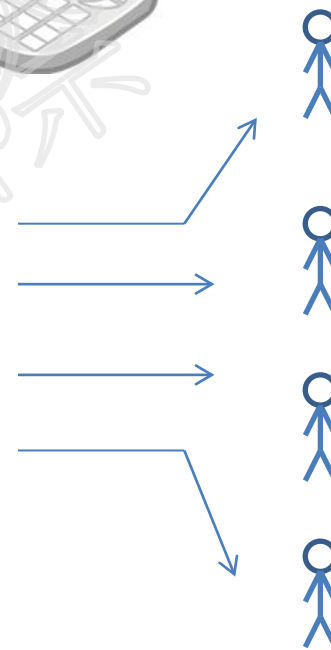


# 成功大學



信號異常



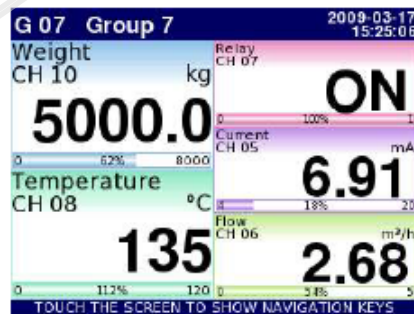
# 操作步驟：

## (1) 設定參數 ( Chamber Name、TRH、I/P、Range、Alm. Display type.....)

### (a) CMC-99主機上設定

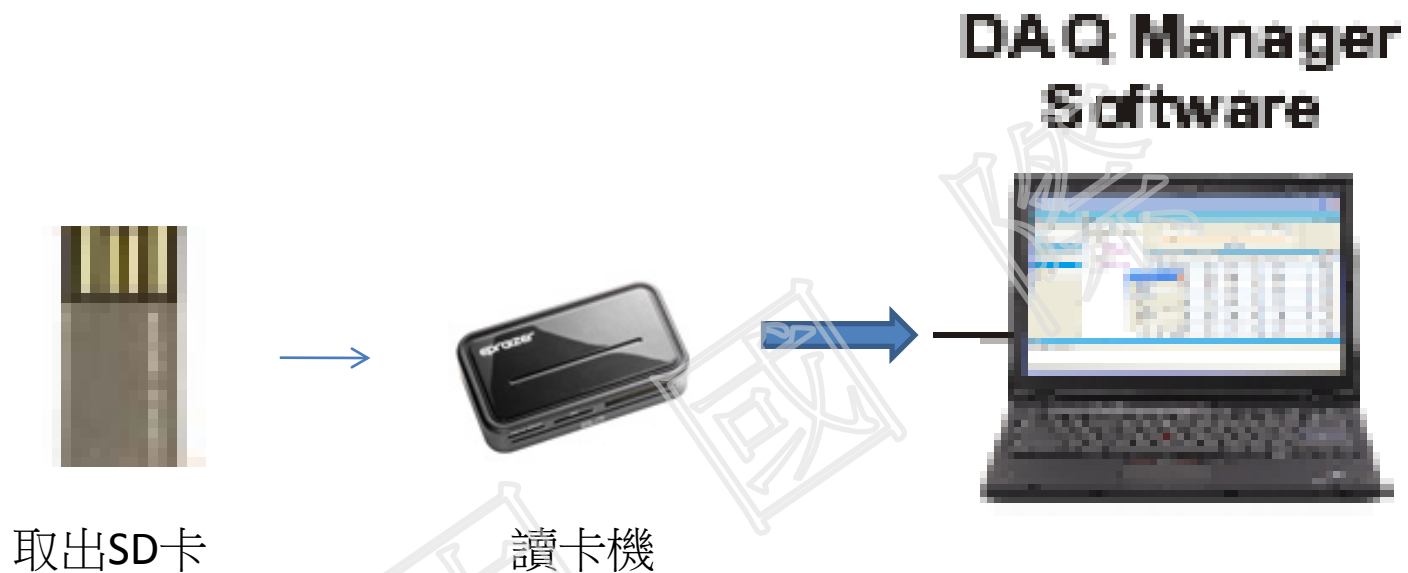


主機-設定參數



主機-溫度顯示 (圖形, 數字....)

### (3) 資料下載 > 分析歷史資料 (流量/溫度 /濕度/壓力....)



- 資料下載
- 分析歷史資料
- EXCEL 報表功能..

斯馬特儀表 >> [www.smartmeter.com.tw](http://www.smartmeter.com.tw)  
[TEL:02-2722-1198](tel:02-2722-1198)

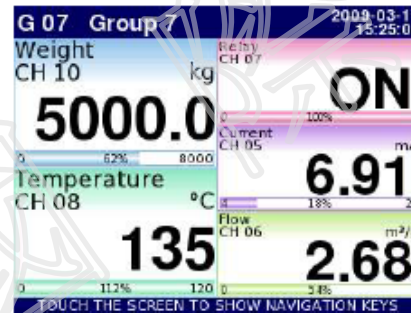
達因工控網 >> [www.umarket.com.tw](http://www.umarket.com.tw)  
FAX:02-2722-1120

# (1) 設定參數 ( Chamber Name、TRH、I/P、Range、Alm. Display type.....)

## (a) CMC-99主機上設定

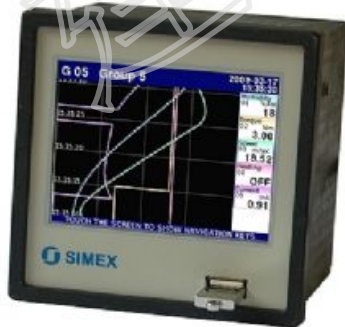


主機-設定參數



主機-溫濕度顯示 (圖形, 數字...)

## (b) Software > SimCorder > PC 端設定參數



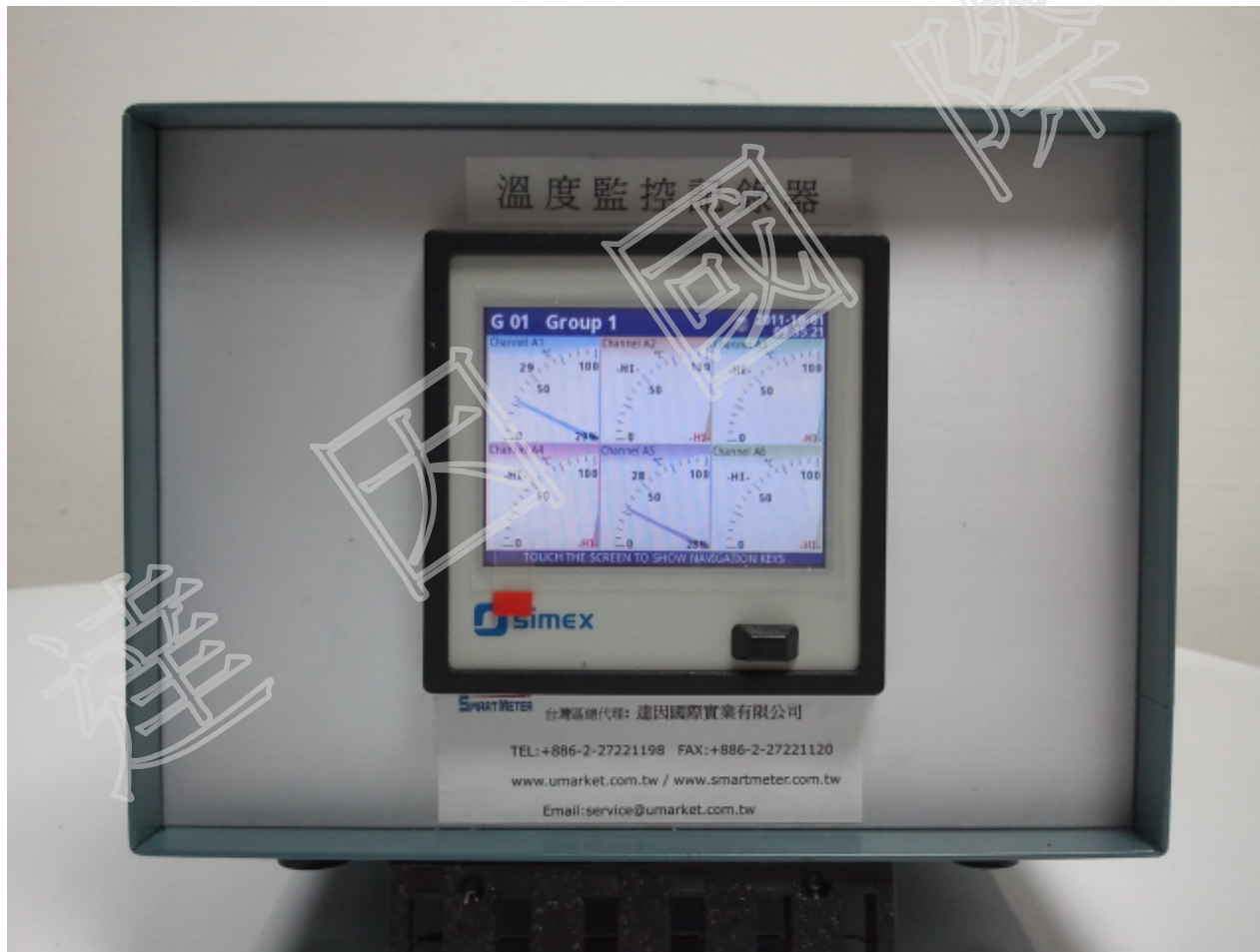
(乙太網路)

DAQ Manager  
Software



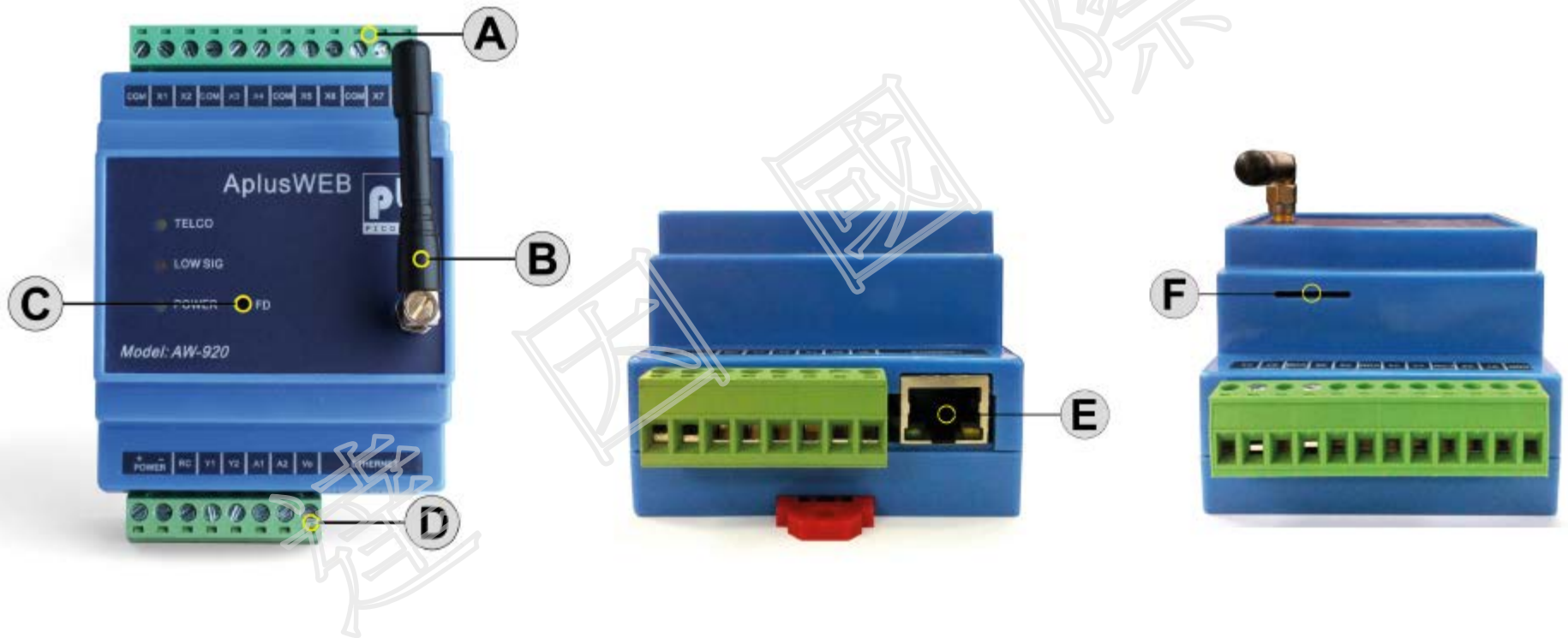
即時監測(設定參數) \* 選購 \*

# 智慧型監控記錄器



**SMART METER**

# 全功能監控發報器(GSM+Ethernet)





**pb AplusWEB**  
 PICOBX Model: AW-920

Device ID: AW920 AplusWEB      GSM Network: STARHUB      Login: Administrator      Date: 08/12/2011  
 IP Address: 192.168.1.87 (Static)      Signal Strength: 74%      Battery: 12.1 Volts      Time: 16:55:30

Input	Description	Status
X1	Input X1	Open
X2	Input X2	Open
X3	Input X3	Open
X4	Input X4	Open
X5	Input X5	Open
X6	Input X6	Open
X7	Input X7	Open
X8	Input X8	Open

Output Relay	Description	Status	Control
Y1	Output Y1	OFF	<input type="radio"/> ON <input checked="" type="radio"/> OFF
Y2	Output Y2	OFF	<input type="radio"/> ON <input checked="" type="radio"/> OFF

Analog	Description	Status	Value
A1	Analog input A1	Low	-17.2
A2	Analog input A2	Low	-24.7

Copyright ©2011 by Linkase Technology Pte Ltd. All Rights Reserved.



- M E N U
- Status
- IO Config
- Phone Group
- Administration
- About
- Help
- Logoff

Input	Description (Max 40 characters)	Open ( 0 - 5 Volt ) (Max 15 characters)	Close ( 0 - 24 Volt ) (Max 15 characters)	Alarm State		
				None	Open	Close
X1	Input X1	Open	Close	<input checked="" type="radio"/>	<input type="radio"/>	<input type="radio"/>
X2	Input X2	Open	Close	<input checked="" type="radio"/>	<input type="radio"/>	<input type="radio"/>
X3	Input X3	Open	Close	<input checked="" type="radio"/>	<input type="radio"/>	<input type="radio"/>
X4	Input X4	Open	Close	<input checked="" type="radio"/>	<input type="radio"/>	<input type="radio"/>
X5	Input X5	Open	Close	<input checked="" type="radio"/>	<input type="radio"/>	<input type="radio"/>
X6	Input X6	Open	Close	<input checked="" type="radio"/>	<input type="radio"/>	<input type="radio"/>
X7	Input X7	Open	Close	<input checked="" type="radio"/>	<input type="radio"/>	<input type="radio"/>
X8	Input X8	Open	Close	<input checked="" type="radio"/>	<input type="radio"/>	<input type="radio"/>

Apply Cancel

Output Relay	Description (Max 15 characters)
Y1	Output Y1
Y2	Output Y2

Apply Cancel

Analog	Description (Max 20 characters)	Unit	Engineering value at 4mA	Engineering value at 20mA	Hysteresis in Engineering unit	Offset Value	Low Alarm	High Alarm
A1	Analog input A1		0.0	70.0	2.0	0.0	16 <input type="checkbox"/>	28 <input type="checkbox"/>
A2	Analog input A2		0.0	100.0	2.0	0.0	40 <input type="checkbox"/>	60 <input type="checkbox"/>

Apply Cancel



Input	Description (Max 40 characters)	Open ( 0 - 5 Volt ) (Max 15 characters)	Close ( 8 - 24 Volt ) (Max 15 characters)	Alarm State		
				None	Open	Close
X1	Power Supply in Basement 1	Normal	Fault	<input type="radio"/>	<input type="radio"/>	<input checked="" type="radio"/>
X2	Water Detection System	Water Detected	Normal	<input type="radio"/>	<input checked="" type="radio"/>	<input type="radio"/>
X3	Aircon in Server Room	Running	Fault	<input type="radio"/>	<input type="radio"/>	<input checked="" type="radio"/>
X4	Poolside Emergency Button	Normal	Help	<input type="radio"/>	<input type="radio"/>	<input checked="" type="radio"/>
X5	UPS in Server Room	Normal	Battery Mode	<input type="radio"/>	<input type="radio"/>	<input checked="" type="radio"/>
X6	Fire Alarm Panel in Security Room	Normal	Alarm	<input type="radio"/>	<input type="radio"/>	<input checked="" type="radio"/>
X7	Booster Pump in Pump Room	Running	Failed	<input type="radio"/>	<input type="radio"/>	<input checked="" type="radio"/>
X8	Main Door in Reception	Door Opened	Door Closed	<input checked="" type="radio"/>	<input type="radio"/>	<input type="radio"/>

Analog	Description (Max 24 characters)	Unit	Engineering value at 4mA	Engineering value at 20mA	Hysteresis in Engineering unit	Offset Value	Low Alarm	High Alarm
A1	Server Room Temp.	Degree C	0.0	70.0	2.0	0.0	16. <input type="checkbox"/>	28. <input type="checkbox"/>

**Operation Group** (Max 15 numeric characters)

1	<input type="text"/>	2	<input type="text"/>	3	<input type="text"/>	4	<input type="text"/>
5	<input type="text"/>	6	<input type="text"/>	7	<input type="text"/>	8	<input type="text"/>

**Authorized Group** (Max 15 numeric characters)

1	<input type="text"/>	2	<input type="text"/>
---	----------------------	---	----------------------

**Forward Number** (Max 15 numeric characters)

1	<input type="text"/>
---	----------------------

**SMS Settings**

**Repeat SMS on Alarm State**     None     Once     2 Times     3 Times     4 Times

**SMS Repeat Interval**     minutes (2 to 30 minutes)    Note: SMS Repeat will be cancelled on receiving the #ack command

**Send SMS when status returns to normal**     Yes     No

**Sim Card Pin Code**        Note: Leave blank if Sim Card is not locked

**GSM modem**

**Clear queued SMS**   

**Send test SMS to Mobile Phone**       

**Operation Group** (Max 15 numeric characters)

1	<input type="text" value="98175004"/>	2	<input type="text" value="+6590889650"/>	3	<input type="text" value="+95260947165"/>	4	<input type="text"/>
5	<input type="text"/>	6	<input type="text"/>	7	<input type="text"/>	8	<input type="text"/>

- M E N U
- Status
- IO Config
- Phone Group
- Administration
- About
- Help
- Logout

Device ID :	AW920 AplusWEB	GSM Network :	STARHUB	Login :	Administrator	Date :	09/12/2011
IP Address :	192.168.1.87 (Static)	Signal Strength :	64%	Battery :	12.0 Volts	Time :	09:34:40
Input	Description	Status					
X1	Power Supply in Basement 1	Normal					
X2	Water Detection System	Water Detected					
X3	Aircon in Server Room	Running					
X4	Poolside Emergency Button	Normal					
X5	UPS in Server Room	Normal					
X6	Fire Alarm Panel in Security Room	Normal					
X7	Booster Pump in Pump Room	Running					
X8	Main Door in Reception	Door Opened					
Output Relay	Description	Status	Control				
Y1	Buzzer	OFF	<input type="radio"/> ON <input checked="" type="radio"/> OFF				
Y2	Beacon Light	OFF	<input type="radio"/> ON <input checked="" type="radio"/> OFF				
Analog	Description	Status	Value				
A1	Server Room Temp.	Normal	24.5 Degree C				
A2	Server Room Humidity	Low (Alarm)	37.0 % RH				

Change Device ID		
Device ID (Max 15 characters)	<input type="text" value="AW920 AplusWEB"/>	<input type="button" value="Apply"/> <input type="button" value="Cancel"/>
Change Date & Time		
New Date	<input type="text" value="09"/> / <input type="text" value="12"/> / <input type="text" value="2011"/> (dd/mm/yyyy)	<input type="button" value="Apply"/> <input type="button" value="Cancel"/>
New Time	<input type="text" value="09"/> : <input type="text" value="38"/> : <input type="text" value="29"/> (hh:mm:ss)	
NTP Server		
Synchronise with NTP server	<input type="text" value="time-b.nist.gov"/>	<input type="button" value="Apply"/> <input type="button" value="Cancel"/>
Time Zone	Enable <input checked="" type="checkbox"/> GMT <input type="text" value="+08:00"/>	
Change Administrator Password		
Current Password	<input type="password"/>	<input type="button" value="Apply"/> <input type="button" value="Cancel"/>
New Password	<input type="password"/>	
Verify Password	<input type="password"/>	
Change Guest Password		
New Password	<input type="password"/>	<input type="button" value="Apply"/> <input type="button" value="Cancel"/>
Verify Password	<input type="password"/>	
Network Configuration		
IP Address	<input type="text" value="192.168.1.87"/>	<input type="button" value="Apply"/> <input type="button" value="Cancel"/>
Subnet Mask	<input type="text" value="255.255.255.0"/>	
Gateway	<input type="text" value="192.168.1.1"/>	
Auto Health Check		
Automatically check and send telco signal strength	Enable <input checked="" type="checkbox"/> Day <input type="text" value="Daily"/> Time <input type="text" value="10"/> : <input type="text" value="00"/> (hh:mm)	<input type="button" value="Apply"/> <input type="button" value="Cancel"/>

## Network Configuration

This setting is self explanatory. Care is to be exercised in setting the IP address and subnet mask values. Incorrect IP address /subnet mask setting will render AplusWEB inaccessible from the network. Invalid IP/Subnet range will also cause AplusWEB to be inaccessible from the network. AplusWEB do have error trapping and will warn of any invalid settings. If for some reason, the trapping misses and the invalid values are accepted by the unit and cause network connection difficulties, contact your distributor for assistance.

Network Configuration	
IP Address	<input type="text" value="192.168.1.30"/>
Subnet Mask	<input type="text" value="255.255.255.0"/>
Gateway	<input type="text" value="192.168.1.1"/>

Apply Cancel

## Auto Health Check

This feature automatically reports to recipients the telco signal strength of AplusWEB over SMS: If enabled, AplusWEB will send an SMS message on the preset day and time. The **Enable** checkbox enables the auto health check SMS to be sent at the scheduled date & time and to the appointed operation phone group.

Auto Health Check	
Automatically check and send telco signal strength	Enable <input checked="" type="checkbox"/> Day <input type="text" value="Daily"/> Time <input type="text" value="10"/> : <input type="text" value="00"/> (hh:mm)

Apply Cancel