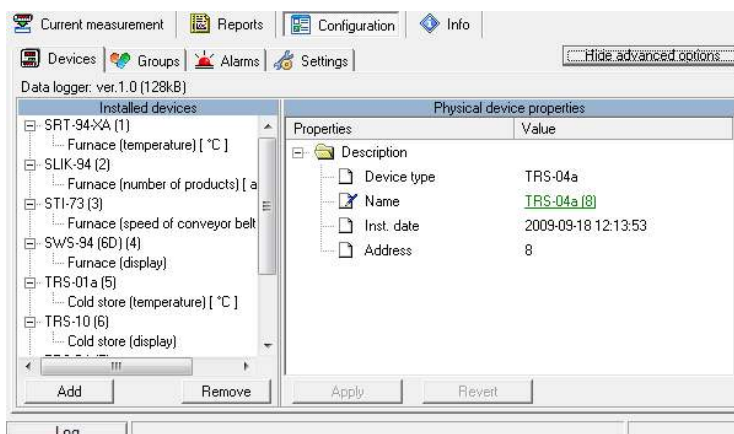
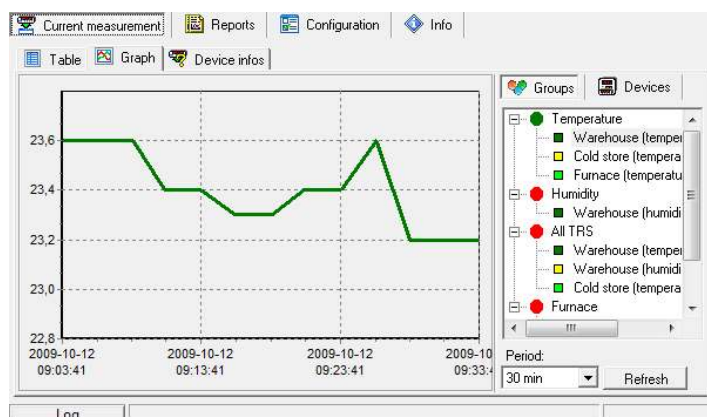


SimCorder Soft

- ▣ universal software for acquisition and data visualization
- ▣ works with SIMEX products equipped with RS-485 interface
- ▣ allows simple analysis of recorded data
- ▣ errors and alarms notifications and reporting



SimCorder is designed for acquisition, archiving, visualization and reporting of measurement data from SIMEX products equipped with RS-485 serial communication interface with Modbus RTU protocol. Converters like RS-485/USB or RS-485/RS-232 allow connecting multiple devices to a computer via USB or RS-232 port. Both devices can be found in SIMEX product range.

Basic software functions:

- data acquisition from distributed measurement devices,
- data registration in database,
- data presentation in tables (no limits for channels in table),
- data presentation in charts (1 - 12 selected channels simultaneously),
- review for critical situations and error list (in tables),
- generate and print reports (tables or charts) in selected period,
- direct data export in text format for other software processing.

Cooperation with local data loggers

Software allows cooperation either with network directly connected to PC or more advanced networks with local data registration system (e.g. backup data loggers) from devices subnet. SimCorder checks if registration device is connected and does operations as follow:

- downloads data logged when application was offline (since previous download),
- archives data,
- reconfigures data logger.

System advantages

GSM notification

SimCorder software (ALARM and NETWORK SERVER versions) is capable of GSM messaging of all announcements (generated by subnet) to user-defined phone numbers. To activate this function simply connect GSM modem to serial port and configure its parameters.

Signalization of system alarm states

Moreover, SimCorder Software allows sound and visual signalisation of every communicate generated by connected input devices. System can be configured for specific reaction of chosen signalization modules. Signalization device can be for example TRS-B1 or SOC-8 modules produced by SIMEX.

Depends on needs there are following versions of **SimCorder Software**:

Features	BASIC	ALARM	NETWORK	
			SERVER	TERMINAL
On demand data measurement	+	+	+	-
Direct cooperation with SIMEX data loggers	+	+	+	-
Easy devices reconfiguration	+	+	+	-
Alarm state signalization	-	+	+	+
GSM notification	-	+	+	-
Remote network	-	-	+	+

NOTES:

- NETWORK version is for max. 10 terminal stations,
- NETWORK SERVER version publishes internet database containing measurement data, while NETWORK TERMINAL version allows remote access to shared data,
- NETWORK TERMINAL version allows only preview of settings. Changes must be done by NETWORK SERVER version, which works directly with device network.