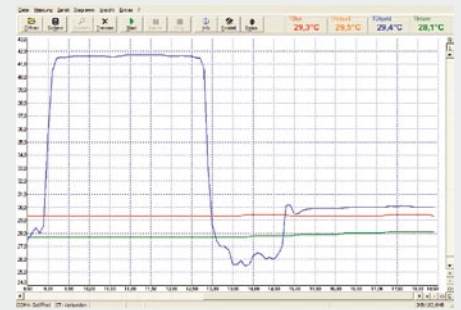




thermoMETER CS

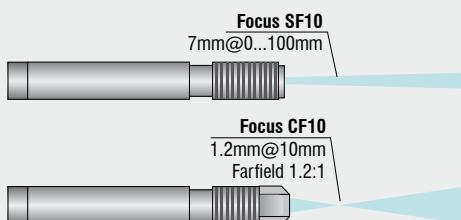
This self contained, non contact infrared temperature sensor requires no external signal condition controller, which makes it an ideal product for OEM applications. It is fully programmable via the digital interface and provides an accurate temperature reading via the analog or digital interface.

- Measuring range from -20 to 350°C
- Robust precision silicon optics with AR coating
- Integrated controller with LED alarm indicator and smart electronic sighting support
- Up to 75°C ambient temperature without cooling
- Short circuit and reverse polarity protection
- Field programmable
- Adjustable emissivity
- Fast response time: 30ms
- Analog outputs with digital interfaces option
- Wide input range: 5 - 7, 12 - 28V DC



Software CompactConnect

- Display, graphic charting and recording of temperature readings
- Easy system configuration and sensor calibration
- Sophisticated signal processing features
- Programming of input and output channels



Optical specifications thermoMETER CS

□ = smallest spot size (mm)

Standard Focus optics

SF10	10:1	7	10	20	30	40	50	60	70	80
distance in mm	0	100	200	300	400	500	600	700	800	

Close Focus optics (CF lense optional available)

CF10	10:1	7	5	1.2	8	16	24
distance in mm	0	5	10	15	20	25	

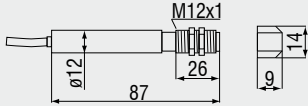
Product identification

CS - SF10 - C3

Fiber cable length [1 m (standard) / 3 m / 8 m / 15 m]

Focus [SF]

thermoMETER CS



Model	CS-SF10-C1	
Optical resolution	10:1	
Temperature range ¹	-20 to 350°C	
Spectral range	8 to 14µm	
System accuracy ²	<1.5% or <1.5°C	
Repeatability ²	<0.75% or <0.75°C	
Temperature resolution ³	<0.2°C	
Response time	30ms to 999s (90%), adjustable	
Emissivity/gain	0.100 to 1.100 (adjustable via 0 to 5V DC input or software)	
Transmissivity/gain ¹	0.100 to 1.100	
Signal processing ¹	peak hold, valley hold, average	
Certificate of calibration	optional	
Outputs/analog	0 to 5V or 0 to 10V 1/10/100 mV/ °C	
Outputs/digital	optional	USB or Alarm
Inputs	programmable functional input for external emissivity/ambient temperature adjustment (0 to 5VDC), hold function or RS232 / USB (optional) communication	
Cable length	1m (standard), 3m, 8m, 15m	
Power supply	15mA (5 to 7VDC), 9mA (12 to 28VDC)	
Environmental rating	IP 65 (NEMA-4)	
Ambient temperature	-20°C to 75°C	
Storage temperature	-20°C to 85°C	
Relative humidity	10 to 95%, non condensing	
Vibration	IEC 68-2-6: 3 G, 11 to 200Hz, any axis	
Shock	IEC 68-2-27: 50 G, 11ms, any axis	
Weight	58g	

¹ adjustable via software² ± ambient temperature: 23 ±5°C; whichever is greater; object temperature ≥0°C³ temperature of the object <100°C and time constant >0.2s

Accessories page 54 - 55

- ▶ CF lense
- ▶ Protective window
- ▶ Mounting bracket / Mounting bolt
- ▶ Air purge collar
- ▶ Right angle mirror
- ▶ Software CompactConnect
- ▶ USB Kit