

SWS-99

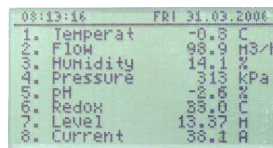
- ▣ multichannel indicator with graphic display
- ▣ RS-485 / Modbus RTU
- ▣ MASTER / SLAVE

The **SWS-99** indicator is intended for displaying the current values and characters defined by user sent from the master device over the RS-485 link (Modbus RTU protocol) from 64 displayed channels. Each channel can be individually designated (described) with any measuring unit (e.g. flow, pressure, humidity, temperature, energy etc.). The LCD graphic display allows for visualization of the values from 8 channels simultaneously. A significant advantage is possibility of viewing the trends in each measuring channel as the graphs for the last 12 seconds or about 1,5 minutes.

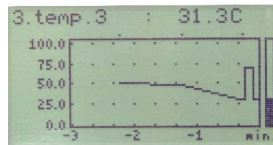
- simultaneous display of values from 8 input channels,
- viewing the trends in each of 64 channels,
- any text description possible: name and units,
- data transfer to the master system via an RS-485 interface,
- password protected,
- versions available with AC and DC power supply.



An example of what the display looks like



8 view values displayed at the same time

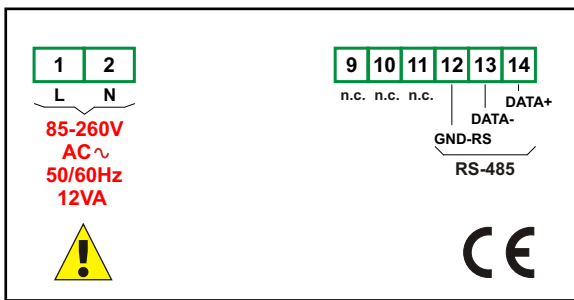


the history of the process in time



the current value in the selected channel
The height of the digits: 18 mm

Exemplary pin assignment




Technical data

- Power supply:** 19V + 50V DC; 16V + 35V AC or 85 + 260V AC/DC, all separated
- Power consumption:** typical 7 VA; max. 12 VA
- Display:** with backlighting, graphic LCD, 128 x 64 points
- Measuring channels:** 2, 4 or 8
- Communication interface:** RS-485, galvanically separated
- Transmission protocol:** MODBUS RTU
- Transmission speed:** 1200 + 115200 bit/sec.
- Operating temperature:** 0°C + +50°C
- Storage temperature:** -10°C + +70°C
- Protection class:** IP 65 (front), available options: additional frame IP 65 for panel cut-out sealing, transparent door STD-99, see: accessories; IP 20 (case and connection clips)
- Case:** board
- Case material:** NORYL - GFN2SE1
- Case dimensions:** 96 x 96 x 100 mm
- Panel cut-out dimensions:** 90,5 x 90,5 mm
- Installation depth:** min. 102 mm
- Board thickness:** max. 5 mm

Ordering

- SWS-99-0000-1-X-XX1**
- options:**
 - 00 : no options
 - 01 : IP 65 frame
 - power supply:**
 - 3 : 24V AC/DC
 - 4 : 85V - 260V AC/DC

Accessories

- STD-99**
Transparent door with moulded frame acc. to DIN 43700, lockable with security key.
- 
- Door and frame are made by injection moulding thus assuring an exact fit, an optimal choice of a material which is very strong and with no risk of corrosion; perfect seal-protective system IP 54 provided by all-round soft rubber sealing the moulding; door does not swing in or out sideways on opening; door-frame and front-frame can be exchanged.