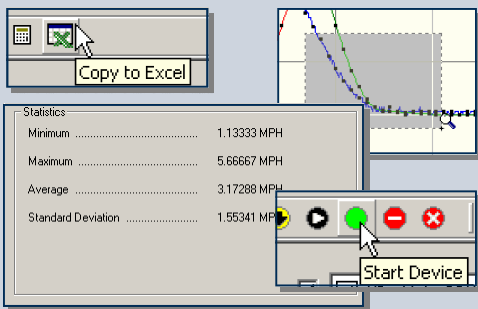


FEATURES

- ❖ Durable housing for logger and display
- ❖ 3-cup anemometer
- ❖ 0 to 100 MPH range
- ❖ 0.34 mph resolution at 10 second sampling rate
- ❖ 4% calibrated accuracy over 5 to 50 mph
- ❖ User-friendly

SOFTWARE

MadgeTech's Data Recorder Software is an easy to use Windows-based software package that allows the user to effortlessly collect, display and analyze data. A variety of powerful tools allow you to examine, export, and print professional looking data with just a click of the mouse.



The WIND110 is a self contained, low cost wind speed recording device. The WIND110 features a data logger with an LCD display and a three cup anemometer to accurately measure, display and record wind speed. The device can record up to 16,383 readings. The storage medium is non-volatile, solid state memory, providing maximum data security even if the battery becomes discharged. The device can be started and stopped directly from a computer using our user-friendly software.



SPECIFICATIONS

Measurement Range:	0 to 100 mph (0 to 45 m/s)
Resolution:	0.34 mph at 10 second reading interval
Accuracy:	4% @ 5 to 50 mph
Memory:	16,383 readings with software selectable memory wrap feature
Reading Interval:	1 reading every second to 1 every 12 hours
Data Format:	User defined engineering units (mph by default)
Start Time:	Software programmable start time and date, up to six months in advance
Software:	Windows 95/98/ME/NT/2000/XP based software
Computer Interface:	PC serial or RS232C COM (Interface cable required); 57,600 baud
Anemometer Dimensions:	2.1" height + 6.8" mounting post x 7.53" diameter (54mm height + 173mm mounting post x 192mm dia.)
Housing Dimensions:	2.9" x 5.8" x 1.5" (74mm x 148mm x 39mm)

*Specifications are subject to change without notice. Specific warranty and remedy limitations apply. Call 1-603-456-2011 or go to www.madgetech.com for details.

ORDERING INFORMATION

Model	Description
WIND110	Data logger and display with housing, 3 cup anemometer
IFC110	Interface cable and software package

ASK ABOUT OUR OTHER DATA RECORDERS

Temperature	Current
Humidity	Pulse/Event/State
Pressure	Level
Bridge/Strain	Shock/Vibration
	Submersible